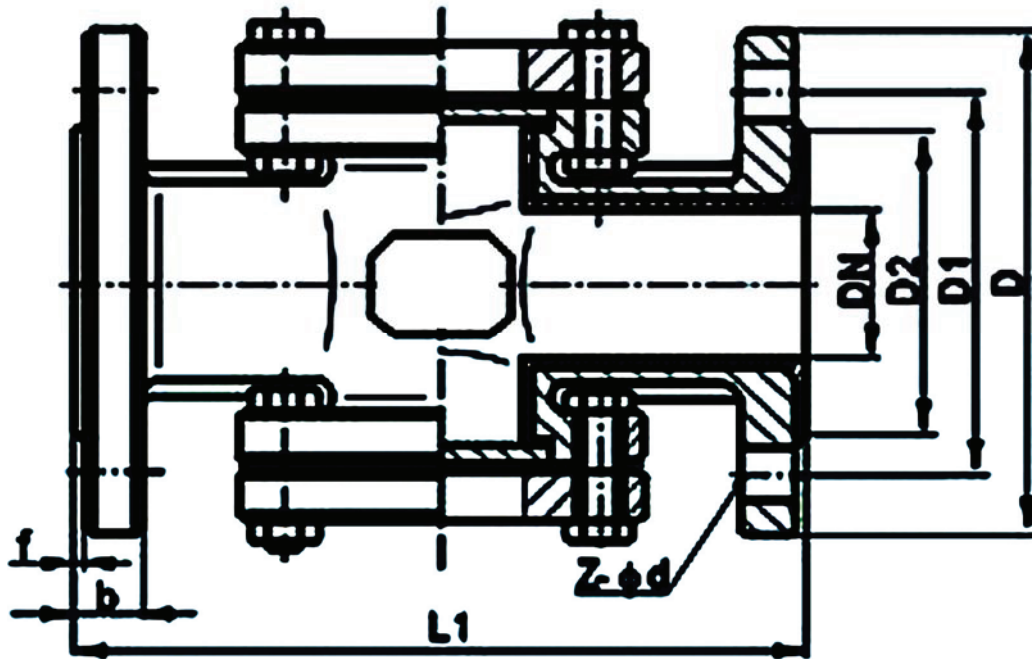


CAST IRON SIGHT GLASS JIS5K



Main material for fittings			
Item	Fittings	Material	Mark
1	Body	Cast Iron	FC200
2	Cover	Cast Iron	FC200
3	Glass	Borosilicate Glass	
4	Seat	PTFE	

Main data for flange connection				mm
PN/DN	Face to Face	Flange Diam	Flange PCD	Flange Hole
	L1	D	D1	Z*d
5K15	200	80	60	4×Φ12
5K20	200	85	65	4×Φ12
5K25	250	95	75	4×Φ12
5K32	250	115	90	4×Φ15
5K40	250	120	95	4×Φ15
5K50	250	130	105	4×Φ15
5K65	250	155	130	4×Φ15
5K80	250	180	145	4×Φ19
5K100	250	200	165	8×Φ19
5K125	300	235	200	8×Φ19
5K150	300	265	230	8×Φ19
5K200	300	320	280	8×Φ23

Design	Check	Signature	Logo	Supplier
asbsey	Chrit	Figor		PROMET VALVES AUSTRALIA
JAN.01,2013	JAN.01,2013	JAN.01,2013		