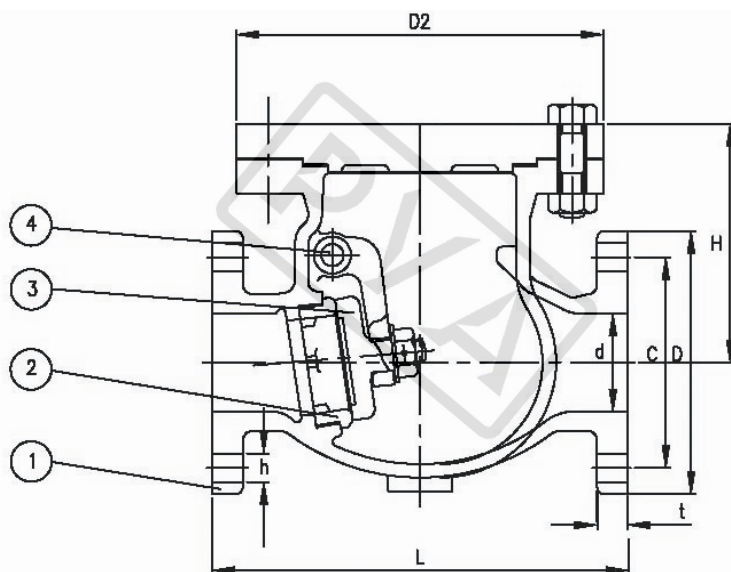



JISF7373 10K CAST IRON SWING CHECK VALVE



Pressure Test		MPa	
Nominal Pressure/PN	1.0MPa	Shell Test	2.1MPa
		Seat Test	1.54MPa

Main material for fittings			
Item	Fittings	Material	Mark
1	Body	Cast Iron	FC200
2	Bonnet	Cast Iron	FC200
3	Disc	Cast Bronze	BC6
4	Seat	Cast Bronze	BC6

Main data for flange connection					mm	
Model	Face To Face	Flange Diam.	Flange PCD	Flange Hole	Height	Weight
	L	D	C	n* \varnothing d	H	kgs
F7373 10K50	210	155	120	4* \varnothing 19	109	13.60
F7373 10K65	240	175	140	4* \varnothing 19	126	19.60
F7373 10K80	270	185	150	8* \varnothing 19	136	22.60
F7373 10K100	300	210	175	8* \varnothing 19	153	30.90
F7373 10K125	350	250	210	8* \varnothing 23	180	49.20
F7373 10K150	400	280	240	8* \varnothing 23	205	64.90
F7373 10K200	480	330	290	12* \varnothing 23	242	103.00
F7373 10K250	570	400	355	12* \varnothing 25	-	245.00
F7373 10K300	690	445	400	16* \varnothing 25	-	295.00

Design	Check	Signature	Logo	Supplier
asbsey	Chrit	Figor		PROMET VALVES AUSTRALIA
JAN.01,2013	JAN.01,2013	JAN.01,2013		

PROMET VALVES AUSTRALIA

1A Green Road Woodville West SA 5011 Australia / Tel:+61 8 8268 1777 / Fax:+61 8 8268 1711
 promet@prometvalves.com / www.prometvalves.com / ABN 47 096 425 697