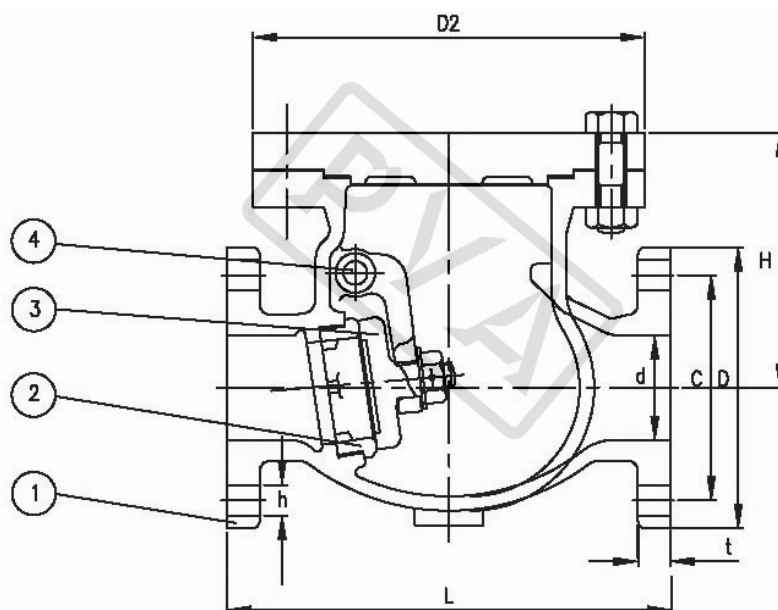



JISF7372 5K CAST IRON SWING CHECK VALVE



Pressure Test MPa			
Nominal Pressure/PN	0.5MPa	Shell Test	0.76MPa
		Seat Test	1.05MPa

Main material for fittings			
Item	Fittings	Material	Mark
1	Body	Cast Iron	FC200
2	Bonnet	Cast Iron	FC200
3	Disc	Cast Bronze	BC6
4	Seat	Cast Bronze	BC6

Main data for flange connection mm						
Model	Face To Face	Flange Diam.	Flange PCD	Flange Hole	Height	Weight
	L	D	C	n* ϕ d	H	kgs
F7372 5K50	190	130	105	4 \times ϕ 15	97	9.06
F7372 5K65	220	155	130	4 \times ϕ 15	119	13.90
F7372 5K80	250	180	145	4 \times ϕ 19	129	19.10
F7372 5K100	280	200	165	8 \times ϕ 19	146	27.10
F7372 5K125	330	235	200	8 \times ϕ 19	171	39.00
F7372 5K150	380	265	230	8 \times ϕ 19	198	53.70
F7372 5K200	460	320	280	8 \times ϕ 23	235	94.40
F7372 5K250	550	385	345	12 \times ϕ 23	290	150.00

Design	Check	Signature	Logo	Supplier
asbsey	Chrit	Figor		PROMET VALVES AUSTRALIA
JAN.01,2013	JAN.01,2013	JAN.01,2013		

PROMET VALVES AUSTRALIA

1A Green Road Woodville West SA 5011 Australia / Tel:+61 8 8268 1777 / Fax:+61 8 8268 1711
 promet@prometvalves.com / www.prometvalves.com / ABN 47 096 425 697