

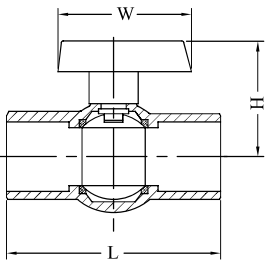
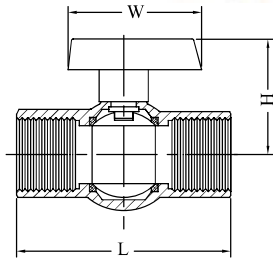
PVC Ball Valves



Material List	
PART	MATERIAL
Body	ABS
Seal Seat	ABS
Ball Stem	NBR
O' Ring	PVC, CPVP, ABS
Handle	EPDM
Cap	PVC, CPVC, ABS

Specifications	
Thread	AS1722.1
Max Working Temperature	120°C
Cold Working Pressure	800kPa

Applications -Agriculture, turf and home watering systems



PVC Ball Valves						
CODE		IMPERIAL SIZE	L	H	W	APPROX. KG/PC
SCREWED	SOCKET					
VPVC15	VPVC15S	1/2	80	46.5	70	0.06
VPVC20	VPVC20S	3/4	92	52	77	0.09
VPVC25	VPVC25S	1	98	65	101	0.14
VPVC32	VPVC32S	1 1/4	113	72.5	110	0.27
VPVC40	VPVC40S	1 1/2	131	73.5	110	0.37
VPVC50	VPVC50S	2	149	89	141	0.59
VPVC80		3	229	124	224	1.97
VPVC94		4	300	148	276	3.84